

# 100885, 189801, 100886 Diverter Service Kits

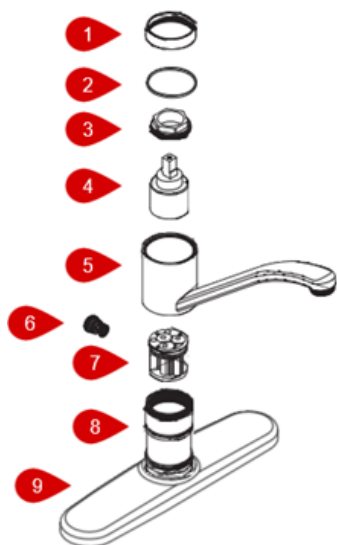
Last updated Oct 5, 2020

This article will provide step-by-step instructions for replacing these service kits.

[Table of contents](#)

## Preparation:

- The water supply shut off valves must be turned off- see article [How to Turn Off the Water Supply to the Faucet](#).
- Recommended Tools: Pliers, Needle-Nose Pliers
- The following instructions assume the handle and associated handle pieces have been removed. For additional details, visit [Single Handle Standard Spout Faucets](#). The faucet guide will contain specific information on the handle assemblies associated with that style of product.



## Disassembly:

1. Unthread the dome (#1) by hand and then lift off the plastic ring (#2).
2. Use pliers to unthread the cartridge nut (#3) and pull the cartridge (#4) out.
3. Pull up on the spout (#5) to remove.
4. Grab the lip on the end of the plastic diverter (#6) with needle-nose pliers and slide the diverter (#6) out. The diverter (#6) will be located on the back side of the valve body (#8).
5. Use needle-nose pliers to remove the hardware kit (#7).

## Assembly:

1. Slide the hardware kit (#7) into the valve body and line up the hole on the side of the hardware kit (#7) with the hole on the side of the valve body (#8).
2. Slide the diverter (#6) all the way into the back side of the valve body (#8).
3. Slide the spout (#5) onto the valve body (#8) until it is flush with the escutcheon plate (#9).
4. The top of the hardware kit (#7) had indents that match up with the feet on the bottom of the cartridge (#4). Line them up and insert the cartridge (#4).
5. Use pliers to tighten the cartridge nut (#3).
6. Install the plastic ring (#2) and tighten the dome (#1) by hand.

For additional information on Moen products visit [solutions.moen.com](https://solutions.moen.com) and select the type of product you are repairing. The guide will contain repair details, troubleshooting and specific information on assembling handles associated with that style of product.